

Dynapac Compact Paver Range



Dynapac F1200C / F1200CS

Sustainable Productivity

Atlas Copco

DYNAPAC COMPACT PAVER RANGE

Introducing the Dynapac F1200. A remarkably compact yet powerful asphalt paver. With a laying capacity of 330 tones per hour, a wide range of working widths and material filling possibilities makes Dynapac F1200 the perfect choice for wide range of jobsites. Equipped with either gas or electrically heated, vibrating or tamping and vibrating screeds the Dynapac F1200 asphalt paver ensures high pre compaction and excellent surface quality. This compact paver offers maximum reliability through the use of high quality components and state of the art design and manufacturing.

Compact Power

Compact Flexibility

The Dynapac F1200 paver is the most compact paver in its class world wide. Its smart design provides excellent all round visibility from the operators platform ensuring the operator remains in complete control. The compact dimensions of the Dynapac F1200, less than 4 ft wide, make transporting easy and convenient.

Powerful Package

The Dynapac F1200CS is fitted with a 4-cylinder Deutz diesel engine with an output of 54 kw (72 hp), providing sufficient power and ability to carry up to 5,5 tones of material in the hopper, whilst maintaining high tractive force. This combined with the low centre of gravity and long, wide crawler tracks ensures that the high tractive force is ensured, even on uneven surfaces.

*Dynapac F1200C / CS tracked paver
– a small paver with big advantages !*



	F1200C	F1200CS
Eng. power at 2,200rpm	66 hp	72 hp
Theor. paving capacity	330t/h	330t/h
Max. working width	10.17ft	10,17ft

SMOOTH WORK FLOW



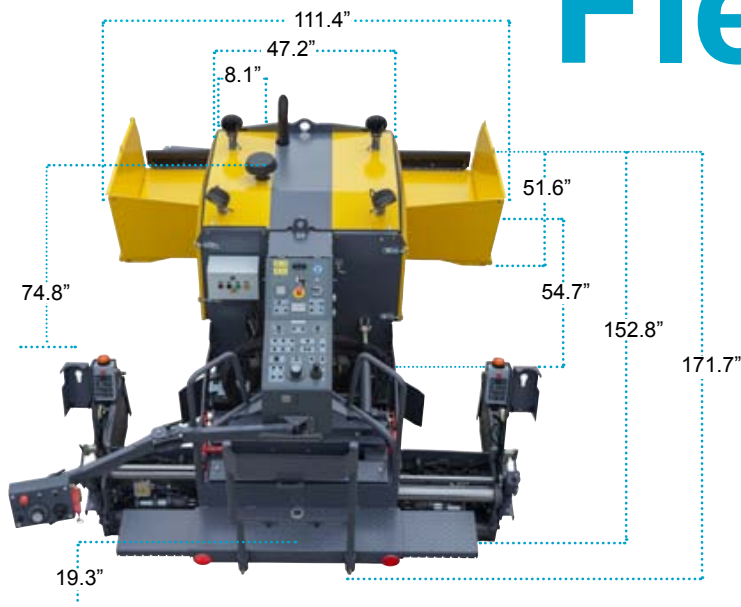
Smart Design

When working with a compact paver, flexibility is everything. One day working on a side walk at 6.6 ft, the next day doing a repair job in a narrow alley,

every job is different. The Dynapac F1200C & CS offers a paving width from 3.94 ft up to 10.17 ft. Paving in narrow areas is made easier by the Dynapac

F1200C's compact dimensions, with a length, which is less than 13 ft and width of 4 ft. With a height of less than 6.6 ft, the Dynapac F1200CS is also suitable for working inside buildings.

Flexible



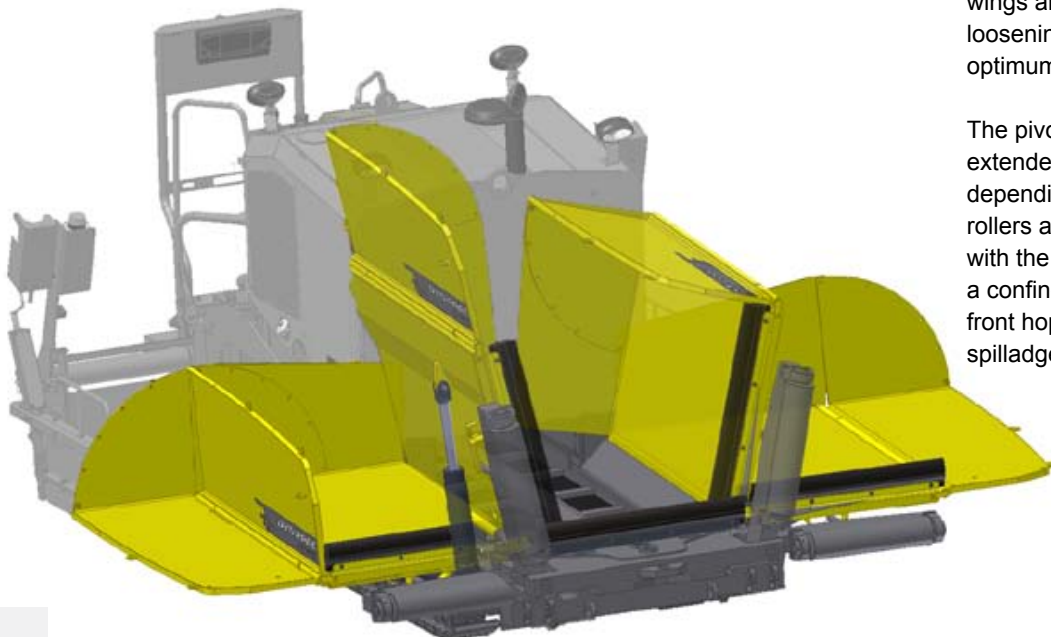


application

Truly Flexible

The F1200 features a large hopper with 5.5t capacity with hydraulically controlled hopper wings. With easily adjustable settings on the hopper wings, the paver can always be used to its maximum capacity. The different settings of the left and right hopper wings are made quickly and easily by loosening one screw and choosing the optimum position to suit the jobsite.

The pivotable push rollers can be extended by 4 inches mechanically, depending on the truck size. Push rollers are automatically raised along with the hopper wings when working in a confined space. Optional hydraulic front hopper flap to further reduce the spillage of material is available.



RELIABLE QUALITY



Fully automated material system

The Dynapac F1200 has a large feeding capacity of up to 330 tons per hour. The 25 inch wide material tunnel prevents segregation. The individual conveyor with its single drive system makes it possible to guide the material flow for asymmetrical paving by covering one side. With the optional cut off shoes, paving smaller widths, can be handled easily with excellent results. Robust paddle switches in the conveyor tunnel are standard and the auger is controlled by ultrasonic sensors. The conveyor is reversible and can be tensioned easily from the outside. This fully automated material feeding system with proportional control ensures an excellent paving result.



Strong auger system

The Dynapac F1200 is fitted with a robust high capacity auger with a diameter of 12.6 inch. Left and right sides are separately controlled and reversible. The large diameter together with the central drive, brings stability and ensures an optimized material flow. The auger is controlled by ultrasonic sensors. Height adjustment can be made infinitely up to 6 inches. The unique refill button allows the auger compartment to be refilled quickly when the machine changes position on the job site.

Unmatched



High traction force

Stable quality and fast transport speed are core features of the new Dynapac F1200. Improved long tracks and powerful hydraulic motors give the machine great stability even at a faster transport and working speed. Grease-tensioning is made easy from the outside of the track frames. Operating the paver is made more comfortable thanks to the new arrangement of the track rollers and an improved center of gravity. Improved hydraulics ensures that the power of the engine is transmitted directly to the ground, giving high traction force for precise paving and excellent results.

Ergonomic Workplace

Logically arranged operators panel is intuitive and easy to understand.

Every toggle switch is positioned according to function group and operational frequency.

For example, frequently used functions, such as hopper, screed and joystick are close to the operator, providing an ergonomic workplace. The operators platform is equipped with a backrest that includes a storage compartment. The operators platform has a non-slip-profile for maximum safety and comfort with extending side steps for increased visibility.



Paving Quality



Minimum working with

With the Dynapac Compact paver range it is possible to pave from 4 ft down to 0.98 ft working width. The basic width of the screed can be steplessly adjusted from 4 ft up to 7.9 ft hydraulically. To reach 10.2 ft you simply mount the 1.15 ft extension boxes. When there is a requirement to pave below 4 ft you have a choice of reduction shoes to reach different working widths. The reduction shoes are easily mounted on the side shields to cover part of the auger which leads to reduced application width. Different shoes can be combined to reach the desired working width. An optional conveyor cover is available to allow feeding to one side.

Working widths:

Basic width	4.0 ft
Hydraulically extendable	4.0 - 7.9 ft variable
Working width with extension	6.3 - 10.2 ft variable

Application with reduction shoes:

Symmetric	1.9 - 4.0 ft variabel
Asymmetric	0.9 - 4.0 ft variabel

FEATURES & BENEFITS

Remote Steering

Optional remote control arm. Useful when paving in narrow situations or “one man” paving.

Low noise level

Reduced noise level through a new engine concept, noise insulation and the thermostatically controlled fan.

Backrest

Gives extras safety and comfort to the operator and can be removed when not needed.

Slidable steps

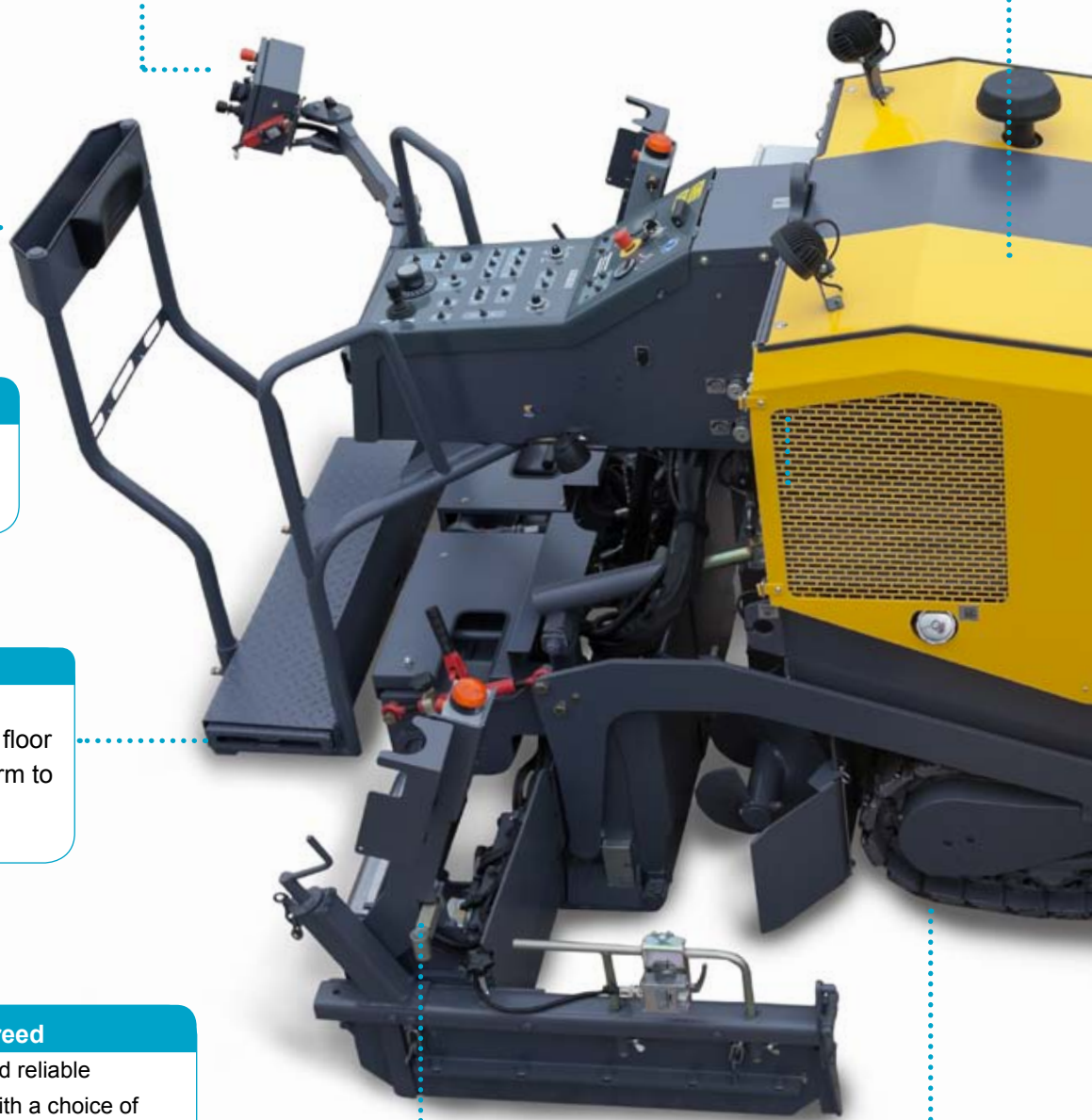
There are slidable step-extensions in the floor of the operators platform to improve the visibility around the machine.

Dynapac Screed

High quality and reliable performance with a choice of Vibration or Tamper & Vibration screeds. We offer both gas and electrical heating.

Wide tracks

The improved long and wide tracks give the machine stability and outstanding traction.



Ergonomics

Excellent view to the hopper and all working areas due to low height and compact dimensions. Logically and intuitively arranged operators panel.

Sustainable drive concept

F1200 features latest technology. The 4 cylinder Deutz engine package is designed to meet tier4 final emission requirements. Thanks to the smart catalyst no maintenance of the after treatment system is needed.

ECO Mode

A stepless Eco-mode system allows you to set the engine speed to the optimal to suit the jobsite.

Compact Dimensions

With a basic width of 4 ft and a length of only 14 ft, the F1200 is the most compact paver in its class.

Adjustable push rollers

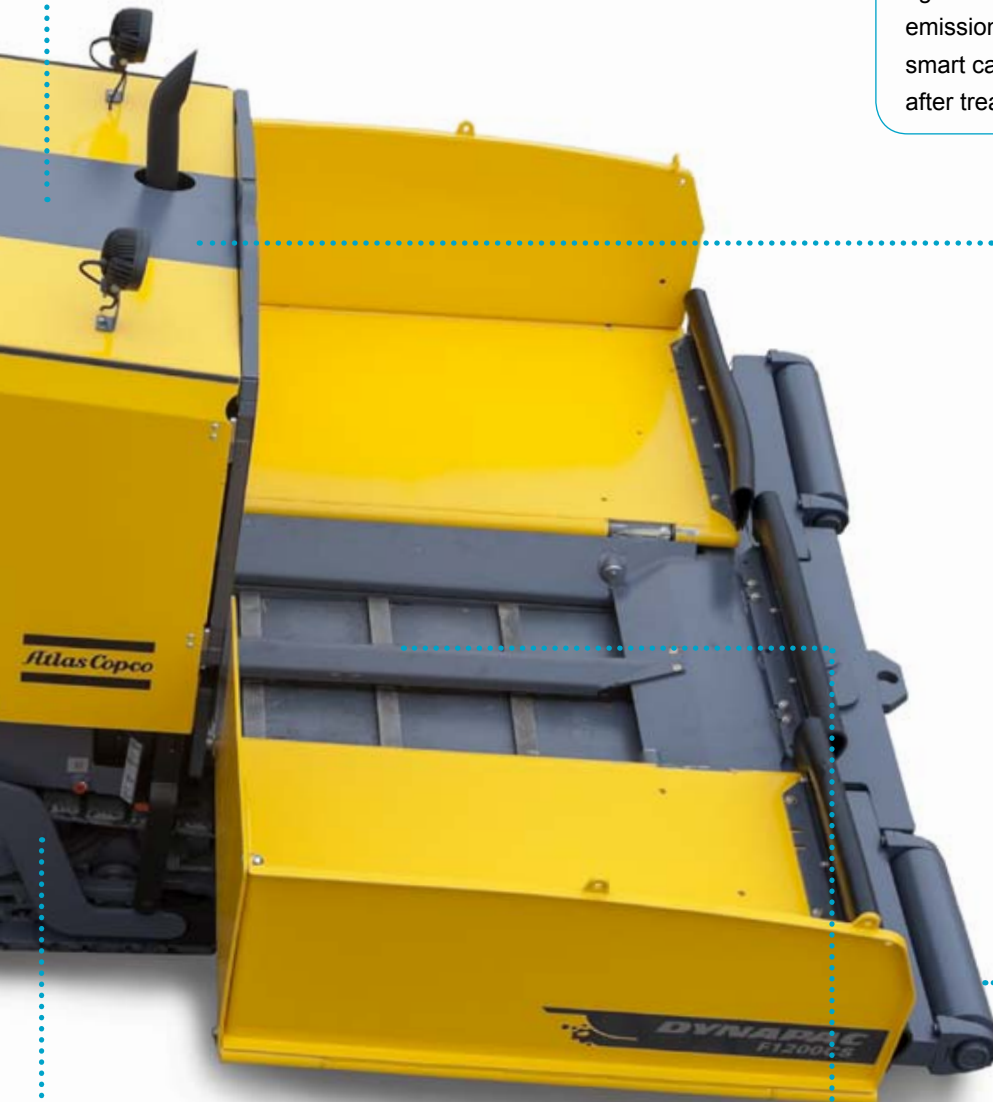
The pivotal push rollers can be extended by 4" for flexible truck docking.

Tow arm geometry

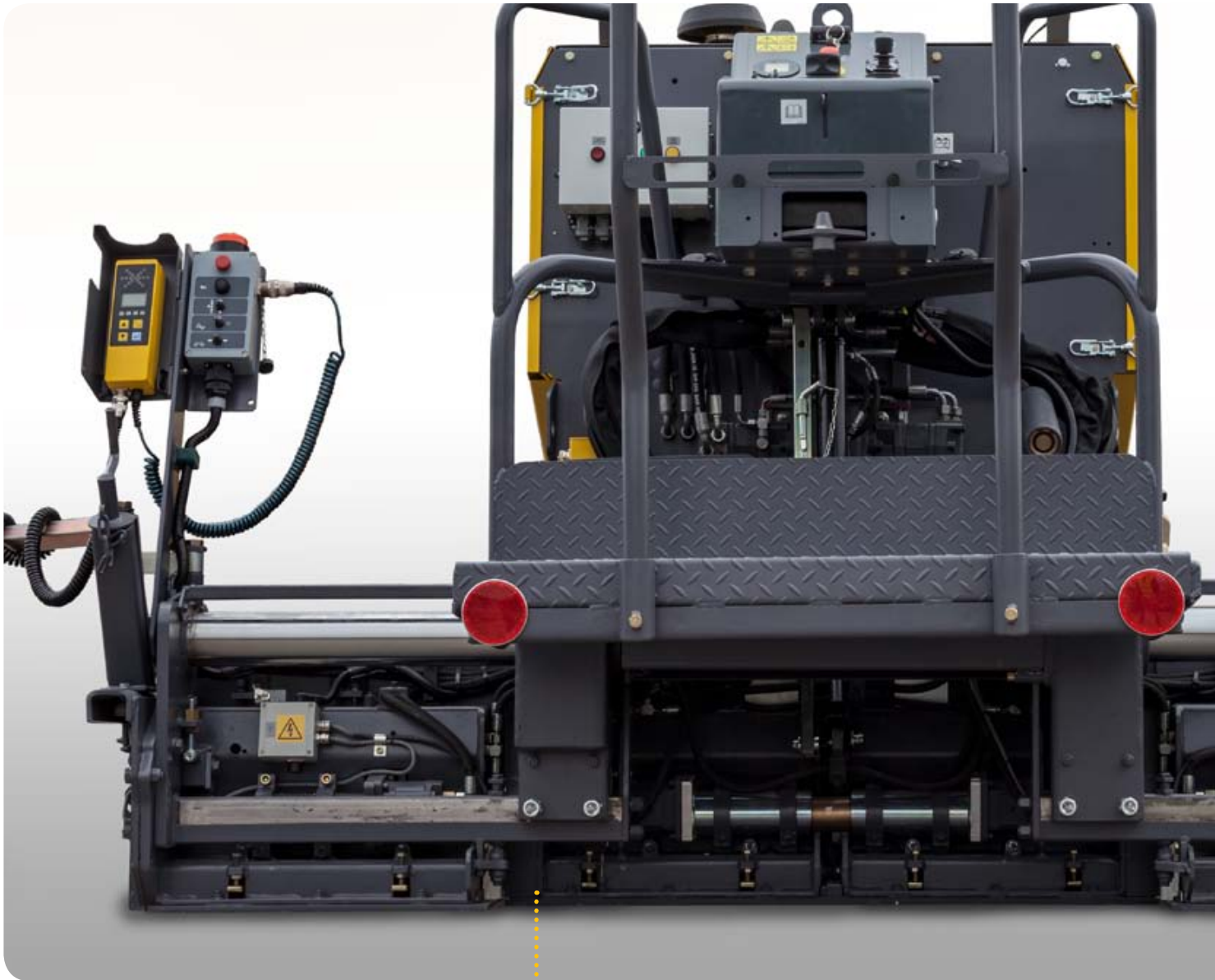
The intelligent tow arm geometry offers paving thicknesses from -6" up to 10".

Smooth material flow

The high capacity conveyor with the 12.6" large auger ensures smooth material flow with minimised segregation.



HIGH QUALITY SCREEDS



Temperature control

The Dynapac F1200C / CS offers the choice between gas or electrical heated screed. Temperature can be set to the required level via the key pad on the dashboard. The screeds have a temperature control unit, ensuring that no energy is wasted and the screed is always at its optimum temperature. All segments of the screed (basic screed and extension parts) are temperature controlled. When choosing electrical heating a short heat up time is ensured with the high capacity generator. With gas heating the heat up time is even shorter. The new gas bottle holders makes it easier to change the small bottles from the side.





Highest Flexibility in its class!

Proven Quality

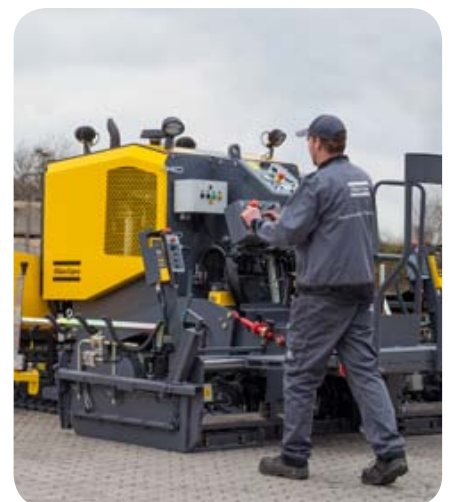
The design of the Dynapac F1200 paver is based on the belief that to achieve optimum pre-compaction, it is necessary to have hydraulic motors for the tamper, and vibration in the basic and the hydraulic extendable screed sections. The screed is based on a one guiding tube principle with one torque support.

The components are robust and wear-resistant. Attention to every detail ensures long life. The wide bottom plate of 8.1", along with the compaction system of tamper and vibration ensures a smooth paving result.



Preciseness

The tamper and vibration speed can be easily adjusted via valves. Positive and negative crown profiling is mechanically adjustable from -1,5 % up to +3,0 %. Both screed sides are equipped with remote controls. All screed functions like extension/ retraction, screed leveling, auger turning direction etc. can be adjusted from the remotes. Optional remote steering allows the operator to drive the machine from the ground. The steering remote contains all drive related functions like speed adjustment, steering and trimming as well as hopper control.



	V240V	V240VE	V240TV	V240TVE
Basic width	3.94 ft	3.94 ft	3.94 ft	3.94 ft
Hydraulically extendable to	7.87 ft	7.87 ft	7.87 ft	7.87 ft
Max. working width	10.17 ft	10.17 ft	10.17 ft	10.17 ft
Min. Working width	0.98 ft	0.98 ft	0.98 ft	0.98 ft
Heating system	LPG	Electric	LPG	Electric
Compaction system	Vibration	Vibration	Tamper&Vibration	Tamper&Vibration
F1200C	YES	YES	NO	NO
F1200CS	NO	NO	YES	YES

DRIVE CONCEPT



Efficiency Focus

The engine features the latest common rail technology. The Tier4 final engine is equipped with a simple and smart after treatment system, which does not require any maintenance or refilling. The hydraulic system is optimally adjusted to the power pack, to give excellent fuel efficiency without compromising on power.

All leveling systems from MOBA are compatible with the Dynapac F1200 pavers.



Power Pack

The Dynapac F1200 paver features the latest technology with a 4-cylinder Deutz engine available as Stage IIIA or IIIB (Tier 4f), giving smooth running with low emission levels. With its reliable hydraulic system and hydraulically driven fan the F1200 offers outstanding economy and efficiency.

Tier4 final gives superior life time value with higher fuel efficiency, reduced maintenance and longer service intervals. It also has improved common-rail technology for improved performance.

Eco Mode

A stepless Eco-mode system allows you to set the engine speed to suit the jobsite. The result is less fuel consumption, less noise and a longer lifetime of your engine. An efficient cooler eliminates the risk for overheating the engine, even in very hot weather conditions, all without affecting the paving result or working efficiency.

Low noise levels

The new Dynapac F1200 has much improved working environment and very low noise level due to efficient insulation concept and thermostatically controlled fan. Separating the fan from engine has resulted in much lower noise and vibration levels.

SMART SERVICE CONCEPT



Reliability

The large 22 gal fuel tank, and long service intervals, combined with wear resistant components ensures increased uptime, reliability and lower cost of ownership

Atlascopco focuses on high value, long life products and therefore deturment to reliable well known suppliers.

Serviceability

Easy to access service points makes daily maintenance and servicing quick and easy. The crawler tensioning system has been improved so that now tensioning from the outside via grease gun is possible.

Easy Transportation

Transportation flexibility is a great advantage when working at various jobsites, saving you time and money. To change location within the jobsite is quickly done with a transport speed of 2 mph. The lower centre of gravity and the well balanced roller setup on the tracks make for a smooth ride when travelling.

The Dynapac F1200 can be transported on a small trailer or together with a roller and planer on common flat bed trucks. The large ramp up angle of 15.5° makes loading even more convenient.





Anytime, Any Product, Anywhere - you can count on us

Servicing your machines regularly is very important to ensure reliable operation and a long service-life. With pro-active service and preventive maintenance you minimize the risk of high production costs and breakdowns. You can select a service contract that meets your requirement for professional service in order to get the most out of your machine investment.

All-in-one box kits

An all-in-one box, tailored to match your equipment. The parts you need, when you need them! An all-in-one box contains all the parts required as part of the equipment's scheduled maintenance program. When installed by an Atlas Copco certified technician, you keep your downtime to a minimum and your equipment in top condition its entire life.

Easy to obtain and attractively priced, the most effective solution to keep your maintenance budget low.

Find a suitable kit at dynapac.com / kitselector

What's included?

Maintenance contract

- Preventive maintenance
- Fluids
- Machine inspection

Care

- Preventive maintenance
- Fluids
- Machine inspection/Inspection protocols
- Extended warranty (also available as a separate product)

Fluids

- The right fluid optimizes machine performance
- Simplified selection process, less time spent on finding the right oil
- Delivery in a handy container, no need for transfer from an oil drum
- All-in-one delivery, less time spent on waiting and dealing with different suppliers
- One invoice, less administration

Find a suitable fluid at dynapac.com / fluidselector

Benefits

- Reduced costs
- Cost known upfront
- Extended warranty (Care)
- Professional and regular machine inspections
- Planned maintenance
- Increased resale value

Please contact your sales rep for more information.

Technical Data Dynapac Compact Tracked Pavers

	F1200C	F1200CS
Weight, lbs	12,800	13,000
Basic width, ft	3.94	3.94
Working width max, ft	10.17	10.17
Working width hydraulic extendable, ft	7.87	7.87
Working width min (w/reduction shoe), ft	0.98	0,98
Placement thickness, in	-5.9" up to +9.8"	-5.9" up to +9.8"
Capacity, t/h	330	330
Paving speed, ft/min	90	90
Transport speed, mph	2.05	2.05
Engine model	Deutz TD2.9 L4	Deutz TD2.9 L4
Rated power KW @ 2200 rpm	66 hp	72 hp
Emissions	EU 3A/3B (Tier3 / 4f)	EU 3A/3B (Tier3 / 4f)
Electrical system, V	24	24
Fuel tank capacity, gal	22	22
Hopper capacity	81 cu. ft. (11,000lbs)	81 cu. ft. (11,000lbs)
Hopper width, in	111"	111"
Dumping height center, in	22"	22"
Crawler length in	54.7"	54.7"
Crawler width, in	8.10"	8.10"
Front ramp angle °	15,5	15,5
Final drive	Direct drive over transmissions	
Conveyor type	Splitted conveyor drive with center cover	
Conveyor width, in	24.4"	24.4"
Conveyor control	Automatic with limit switches	
Auger diameter, in	12.60"	12.60"
Auger control	Automatic with ultrasonic sensors	
Screed options		
Vibration screed V240V	YES	NO
Vibration screed V240VE	YES	NO
Tamper-Vibration screed V240TV	NO	YES
Tamper-Vibration screed V240TVE	NO	YES

